



0800 000 168

14 Harrow Street, Dunedin

tmcteam.co.nz

# PL-200

Deployable portable lighting in one  
bespoke robust package.

Portable  
Petal-like  
Tripod Light

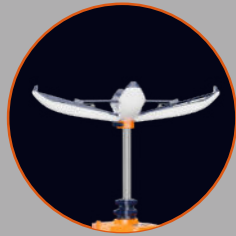


SCAN ME

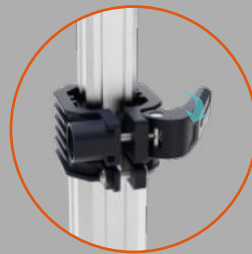


# LIGHTER, BRIGHTER, FASTER DEPLOYMENT

Unfolding or folding the PL-200 takes just two steps, in under 10 seconds.



4-level adjustable petal angle, switches from sphere to hemisphere lighting coverage.

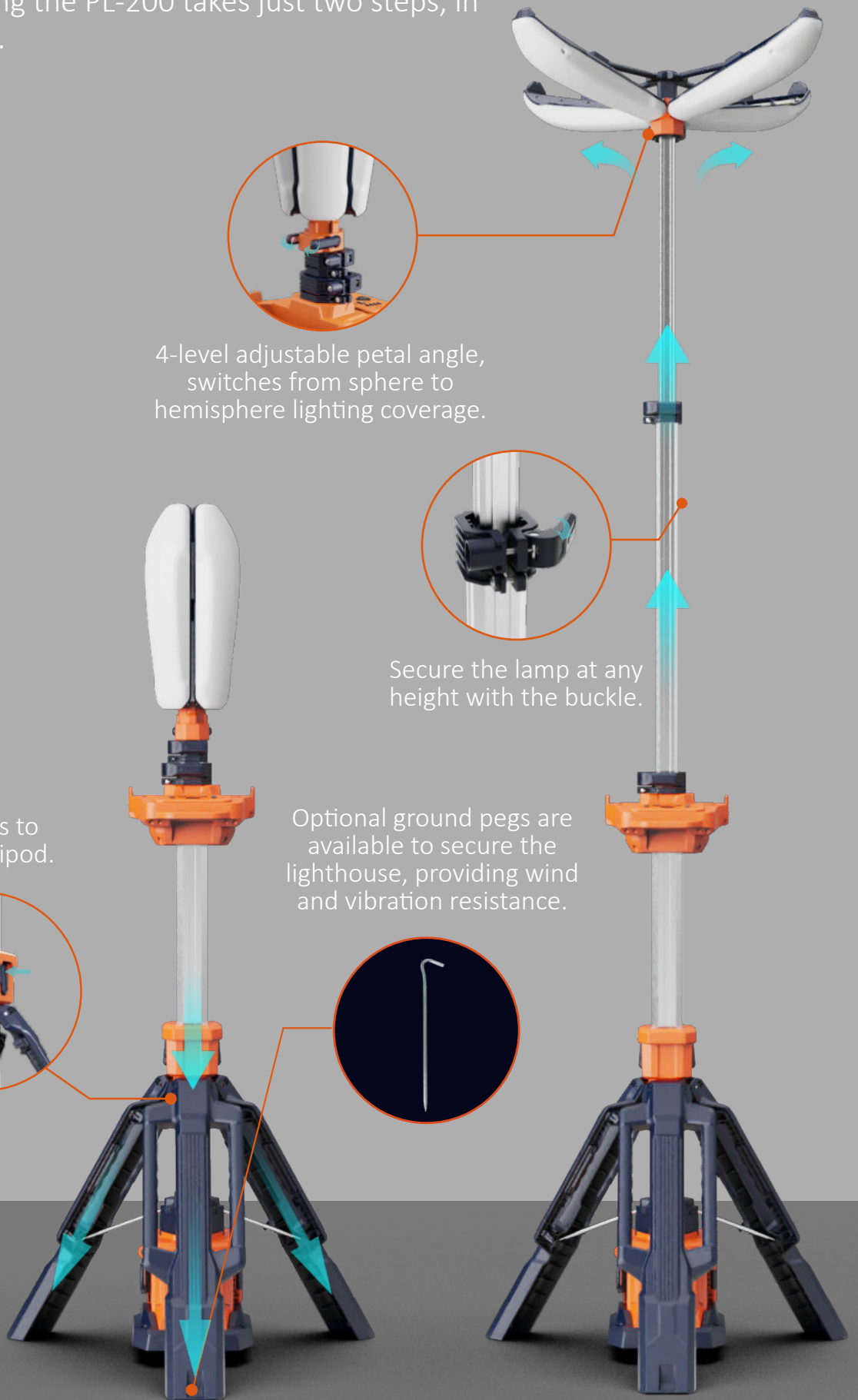
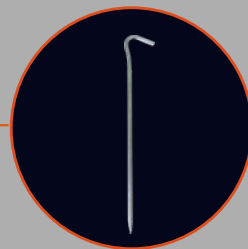


Secure the lamp at any height with the buckle.

One keys to release tripod.

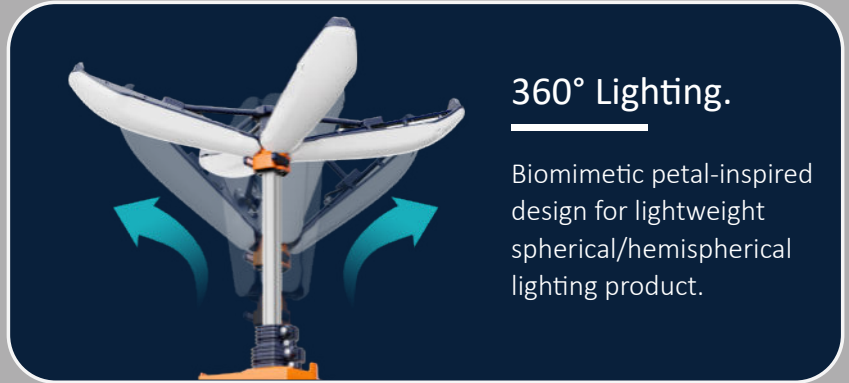
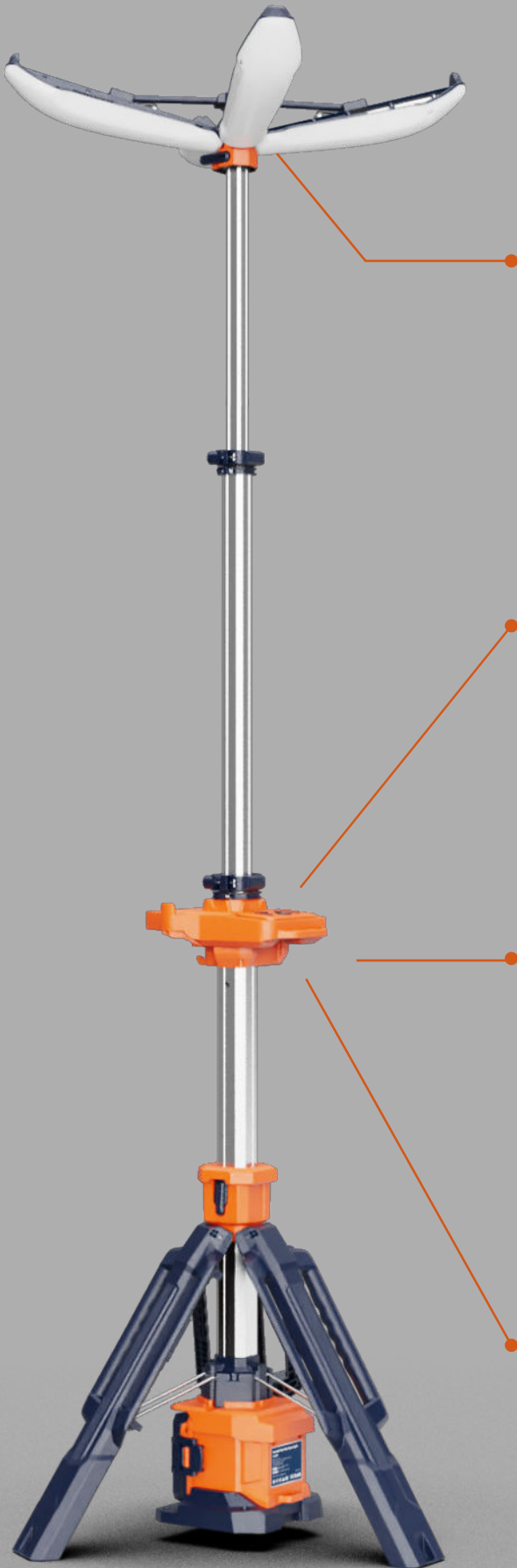


Optional ground pegs are available to secure the lighthouse, providing wind and vibration resistance.



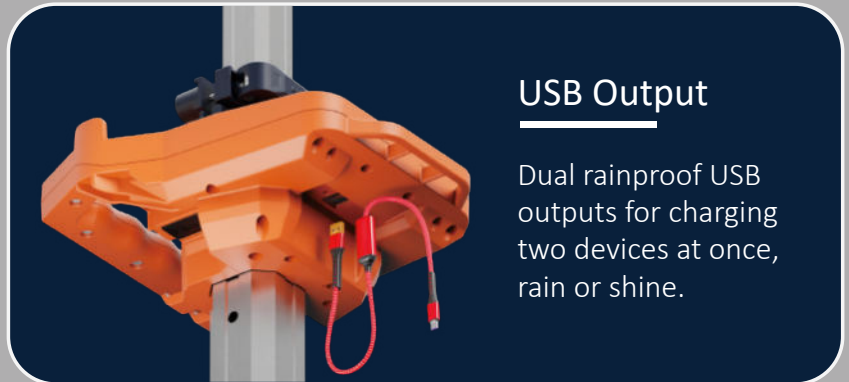
# HUMANIZED DESIGN HIDDEN IN THE DETAILS

---



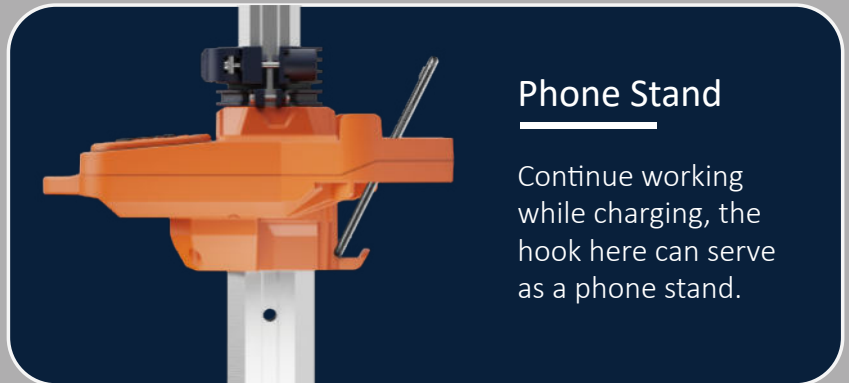
## 360° Lighting.

Biomimetic petal-inspired design for lightweight spherical/hemispherical lighting product.



## USB Output

Dual rainproof USB outputs for charging two devices at once, rain or shine.



## Phone Stand

Continue working while charging, the hook here can serve as a phone stand.



## Stepless Dimming

Plug the driver into the rainproof port to unlock maximum brightness and stepless dimming.

# Ultra-long Endurance

Standard Mode Up To **8+** Hours  
(D24-100)

2 type of battery packs with different capacities have same contact slot.



D24-54

Typical working hours 22 hours on PL-200 Eco mode.



D24-100

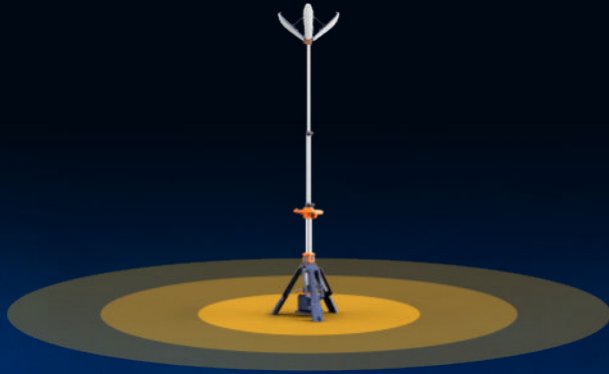
Doubled typical working hours to 45 hours.

**Multiple batteries, charging, and AC power solutions.  
Stay powered and productive!**



# Uniform illumination with 360-degree coverage and no dead angles

- Lighting Area 1100 m<sup>2</sup>



AC Powered

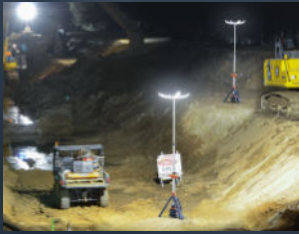
Up To **12,000** LM

Battery-powered

Up To **6,000** LM

AC	0-12,000LM Stepless Dimmable	
Battery (4 Mode)	Turbo	6,000LM
	Standard	3,500LM
	Balanced	2,200LM
	Eco	600LM

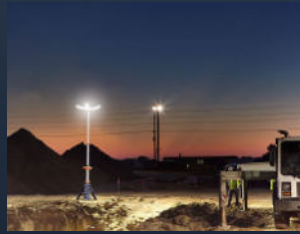




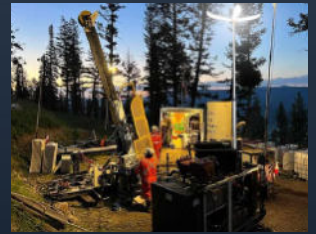
Construction



Maintenance



Infrastructure



Mining



Railway



Emergency



Camping



Sport

# One person operation

Less than 6.5Kg exclude battery.



2.5m



1.3m



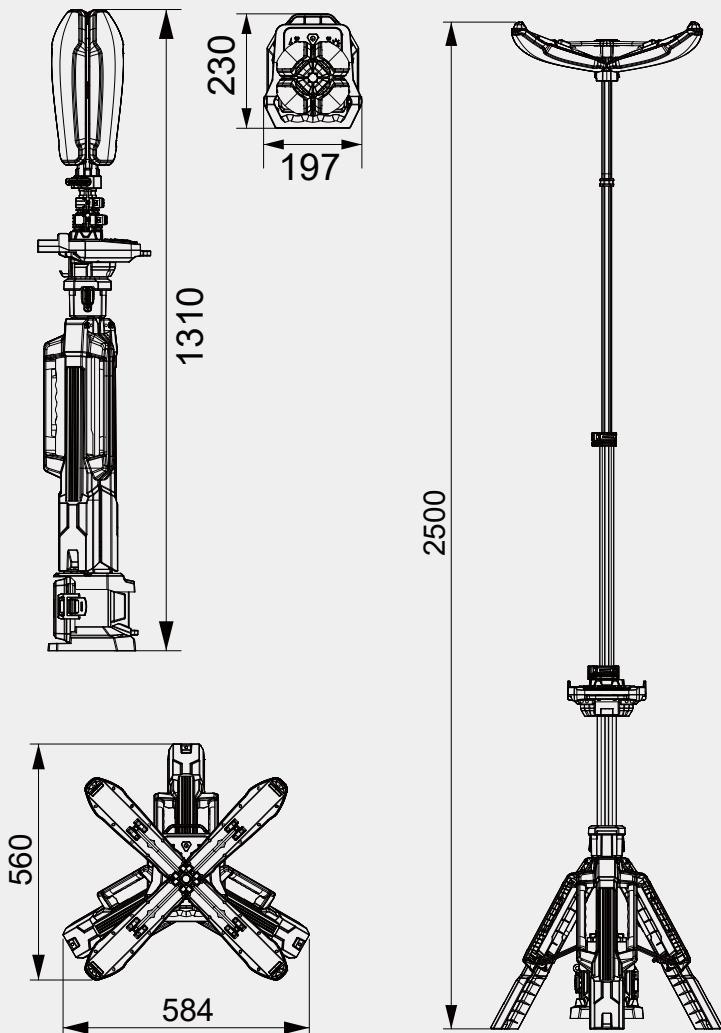
# Specifications

## PL-200

Height	1.3m~2.5m
Weight	6.5Kg (Fitting only)
Power Supply	D24 series battery pack / AC 100-277V
Lumens	0 - 12,000Lm
Run Times	>8 hours (Standard mode, D24-100)
IP Grade	IP66
Output(USB)	5V 2A (2 Dock)

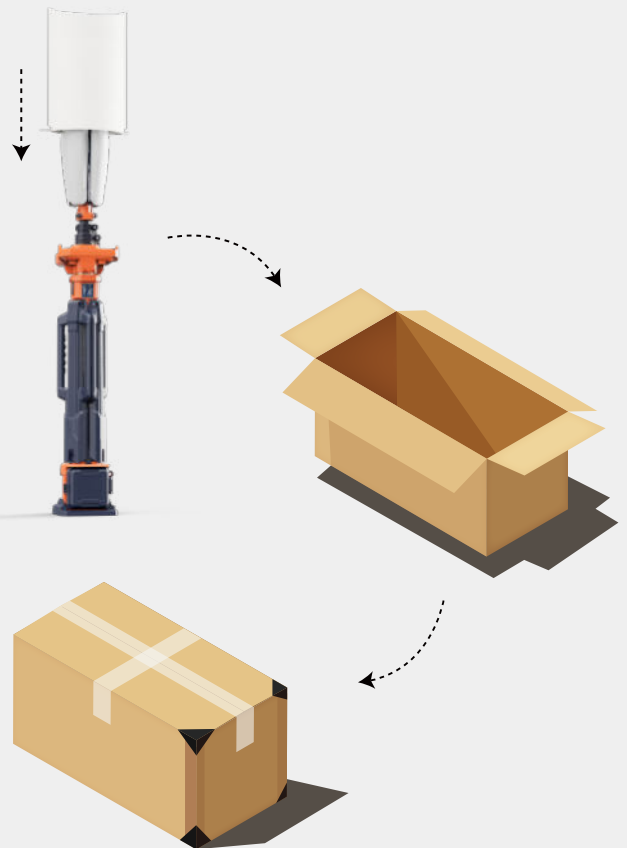


## Size (mm)



## Package

Model	PL-200
Size of Carton	138x27x33cm
Gross Weight of Carton	8.5KG±5%
PCS/Carton	1



TRAFFIC MANAGEMENT & CONTROL LTD

Tel: 0800 000 168

Web: [tmcteam.co.nz](http://tmcteam.co.nz)

E-mail: [sales@tmcteam.co.nz](mailto:sales@tmcteam.co.nz)

Address: 14 Harrow Street, Dunedin

